

2016

NOVEMBER NEWSLETTER



# Mountains & Meadows Pickleball Club

## WINTER SEASON BEGINS

A great Summer Season has ended and we are now into the 2016/20017 Winter program.

Indoor play will commence on Sunday, November 6th at 6.00pm at the Meadows Valley High School gymnasium.

Additional evenings will be added when the gymnasium becomes available for our use.

Thanks to Art & Cynthia Peavey for organizing use of this facility for us.

Play will commence at Donnelly Bible Church early in the New Year, but in the meantime there will be a special night of **Pizza and Pickleball** at Donnelly Bible Church - Tuesday, November 22<sup>nd</sup>, at which time we plan to tape the courts, play and eat pizza. We may start playing there each Tuesday commencing December 6<sup>th</sup> (to be confirmed).

Play has ceased at Lutheran for this season; play may continue at the Club for a week or so,

depending on the weather - you will receive short term notice from Laurie.

A note from Laurie:

*"Thank you everyone for a great summer of outdoor Pickleball! Thanks to all for their help with the nets, building the hitting wall, helping set up and take down, maintaining courts, building a template for painting courts, painting courts, writing up the news, and most of all.....for continuing to come out and PLAY!"*

*Mountain and Meadows Pickleball club membership is at an all time high of 65 members and I want to thank you for your continued support.*

*Your donations to Lutheran Church came to just over \$450 this year. Donations go towards court maintenance, fencing, paint, a wheelbarrow and rake, the awesome yellow wagon to put everything in, a donation to Jamie's place (a local charity for*

*Continued Page 2*

MARK YOUR CALENDAR  
NOVEMBER

## Weekly Events



### Sunday

6.00/9.00pm - Indoor Pickleball at MVHS

### Tuesday Nov 22

Pizza & Pickleball - Donnelly Bible Church

### Questions

### CONTACT

- Mountains & Meadows Pickleball Club  
e: [mandmpickleball@gmail.com](mailto:mandmpickleball@gmail.com)  
w: [www.mmpickleball.club](http://www.mmpickleball.club)



# One Season ends and another starts

women in crisis), and NEW this year – your donations will go towards a yearly campership to sponsor a kid (maybe even 2) going to Camp Perkins. This is a Lutheran Church camp near the Sawtooth Mountains and they actually have a Pickleball court there! Thank you so much for your support of this program.

Lastly I want to thank everyone for my surprise party and gift card and all the nice things you wrote in my cards. I am still overwhelmed that you would do

this for me. I want to especially thank Connie, always there to lend a hand or a shoulder!

I am planning to use my gift to take Paul on a fun trip somewhere. Maybe a pickleball tour of the Oregon coast?"

Laurie Janssen  
Secretary/Treasurer  
Mountains & Meadows  
Pickleball Club



## **Friends of Cascade Pickleball**

Indoor Pickleball is scheduled Wednesday and Sunday evenings from 6:00pm to 8:00pm at the Cascade Elementary School gym. Nets will be set up and paddles and balls will be available. You will need clean indoor shoes to play to protect the floor. There two courts available to start with an option for a third court after volleyball season ends. For further information contact: Kristin Meyer - email:

[meyer223@frontiernet.net](mailto:meyer223@frontiernet.net)

## SEPTEMBER EVENT AT THE LUTHERAN COURTS



**A Special Thank You Event** for our super Secretary/Treasurer, Event Coordinator and all things Extraordinary!! (thank you to Connie for organizing this surprise event at the Lutheran Courts late September for a very special person).

Continued Page 3



# 2016 Summer Season Ends



Players brought delicious snacks to share ... there was more sharing than playing!!  
Thanks to everyone for helping pack up all the equipment which is now in storage until next Spring.



About 15 players attended the final evening of play at the 45th Parallel Courts at Meadow Creek in September.



Above: Action on the courts.

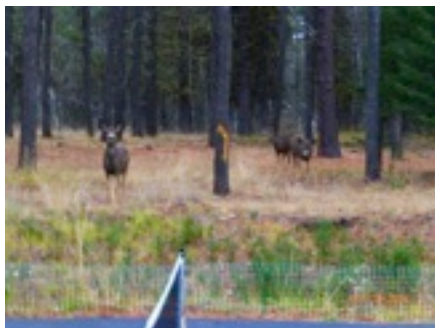
Below: Curious spectators



Above: Action on the courts.

Below: This onlooker has his eye on the ball.

**Lutheran  
Church  
Pickleball**



"The (hitting) Wall" at Aspen Village.